

LM400

Repeat Length Measurement System

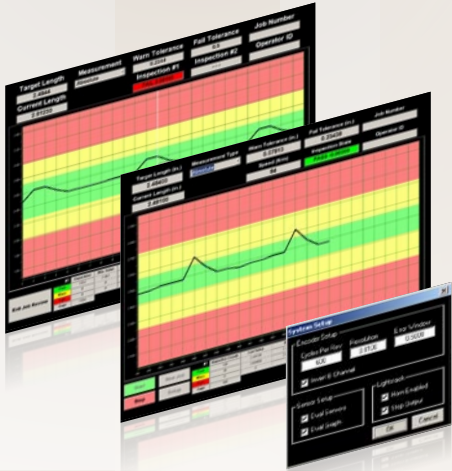


- Accurately measures repeats up to 144"
- Accurately measures to .0025" (.064mm)
- Easy-to-use operator interface
- Remote diagnostics

LM400

REPEAT LENGTH MEASUREMENT SYSTEM

The LM400 is an affordable, easy to operate repeat length monitor system equipped with an encoder and mark sensors. The system measures the repeat of a moving web and displays real-time repeat length on a high-resolution monitor.



SETUP: A easy-to-use setup screen allows the operator to program details about each job, or load information from a previous run.

RUN: The LM400 displays a real-time graph of repeat length, as well as a history of 100 or more repeats. The interface gives the operator quick access to job specs, including a running count of pass, warn, and failed repeats, run speed, and target repeat length.

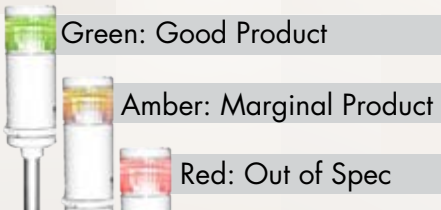
LOGGING: A report is created for each job that contains all measured repeat lengths. This report can be stored on your company network or printed immediately.

EXPANDABILITY: The LM400 can be expanded to include input from 4 mark sensors across the web, as well as output up to 8 signals to alert operators of out of specification runs.

RELIABILITY: Each system includes remote support and diagnostics, as well as free software updates for life.

APPLICATIONS: Critical runs on any press where tension may not be stable, including film, paper, and foil.

LIGHT STACK COLORS INDICATE:



SIMILAR PC INDUSTRIES PRODUCTS:

RC400: AUTOMATIC REGISTRATION CONTROL AND **MLS/ELS400:** ADVANCED REGISTRATION CONTROL

SPECIFICATIONS

Operating System	Windows XP Professional or Windows 7
Computer	High performance computer, suitable for production environments
Remote Support Access	Via internet
Number of Scanners	Up to 4
Max. Web Speed	1200 ft./min. (366 M/min.), optional 3000 ft./min. (914 M/min.)
Min. Repeat Length	.75" (19mm)
Resolution Accuracy	Standard: .010" (.25mm) - Optional: .005" (.13mm) , .0025" (.064mm)
Input Devices	19" LCD monitor, mouse, and keyboard. Touchscreen monitor optional.
Indicators	Up to 8 programmable output signals, inc. light stack alert on out-of-spec runs
Power	110/220 volt, 50/60 Hz, 500 Vac. External surge protector with status indicators
Report	Full run report and audit trail



176 Ambrogio Drive, Gurnee, IL 60031-3373
Tel: +1(847) 336-3300 • Fax: +1(847) 336-3232
Sales@pcindustries.com • www.pcindustries.com

Dist. by: